

# GAM-70 非接觸式測厚機

## Laser Vision Measurement 品管量測設備



Windows



### 產品特性 (FEATURES)

- 使用Windows的視窗介面，中/英文畫面，操作簡單。
- 自動/手動量測錫膏厚度。
- 手動測量長、寬及兩錫膏間之距離(間距)。
- 自動計算面積、截面積、體積。
- 測量值可記錄存檔及列印。
- 提供厚度分佈統計圖表及X-Bar-R管制圖表。
- 自動計算製程能力指標Cp,Cpk,Cpm。
- 可依不同生產線分別作記錄。
- 可依基板厚度調整焦距。
- 可做定時呼叫取樣。
- All operations are easy and using Window's interface in Chinese/English version.
- Survey the thickness of tin solder by automatically or manually.
- Survey the length and width manually, and the gap of tin solder.
- Calculate the measure of area, the measure of cross-section and the measure of volumn automatically.
- All surveyed values can be recorded to a file and be printed to a report.
- Provide the diagrams of thickness distribution and control diagrams of X\_BAR\_R.
- Calculate manufacture ability degree automatically(Cp, Cpk, Cpm).
- It can have separate record according to every different production line.
- It can adjust focal distance in different thickness of PC boards.
- It can be called to sample periodically.

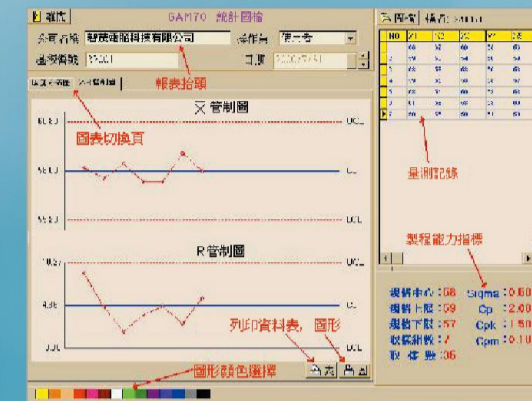
### 適用 (APPLICATION)

- 各式厚度量測數值得統計分析。
- 錫膏印刷製程品管檢查。
- 錫膏印刷厚度良性測量。
- 錫膏印刷成型、尺寸量測檢查。
- 提供其他物品測厚、測長、量測檢查。
- Get the results of statistics and analysis about all surveyed values in every thickness degree.
- Inspect the quality of solder printing process.
- Survey the thickness of tin solder.
- Measure the dimension of tin solder.
- Provide thickness and dimension measurement function for other objects.

### 功能 (FUNCTION)

- 量測印刷錫膏厚度、長度、高度、間距。
- 提供厚度分佈數值參考。
- 不同截面積厚度分析。
- 自動運算量測點面積、體積等資料。
- 提供各種統計分析圖表。  
X管制圖, R管制圖, 厚度列表  
X平均值管制圖, 單點列表
- Surveying the thickness of printing tin solder, length, height and gap.
- Provide the references of thickness distribution values.
- Provide the analysis of different measure of cross-section.
- Calculate the measure of area and volumn automatically in object which to be surveyed.
- Provide all diagrams of statistics and analysis.  
Provide X Control Diagram, R Control Diagram and Thickness List Diagram.  
Provide X Average Control Diagram, Single Point List Diagram.

www.genitec.com.tw



### 管制圖表列印 Printing of Control Diagrams

- X - R管制圖表顯示及列印。
- Cp, Cpk, Cpm等製程能力指標系統。
- Calculating and Printing of X and R Control Diagrams.
- Calculation and Statistics of Manufacture Ability Degree in Cp, Cpk, Cpm and so on.

# GAM-70 非接觸式測厚機

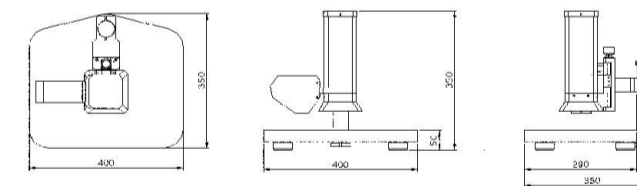
## Laser Vision Measurement 品管量測設備

### 規格 (SPECIFICATIONS)

可視範圍 Visual Range	2.5 mm x 2 mm
倍率 Focusing Power	x90
台面尺寸 Measure ment Table	350 (W) x 265 (L) mm
重複精度 Repeat Accuracy	±0.0035 mm
解析度 Resolution	0.007 mm
檢查方式 Inspection Method	Laser Vision
電腦規格 Computer Specification	IBM相容界面 IBM Comptible Interface
顯示器 Screen	15" LCD
鏡頭 Lens	彩色CCD攝取圖像鏡頭組 Color CCD Camera
照明 Light	環形LED白光照明燈具 LED Ring Light
對焦 Focus	粗/微調對焦裝置 Focusing Control System
消耗功率 Power Consumption	400 VA
操作方式 Operation	可中英文切換 Chinese / English Version
電源 Power	110V, 60Hz / 220V, 50Hz
尺寸 Dimensions	350 (L) x 400 (W) x 350 (H) mm
重量 Weight	30公斤(kg)

規格如有變更, 恕不另行通知 (Change Without Notice.)

### 尺寸 (DIMENSION)



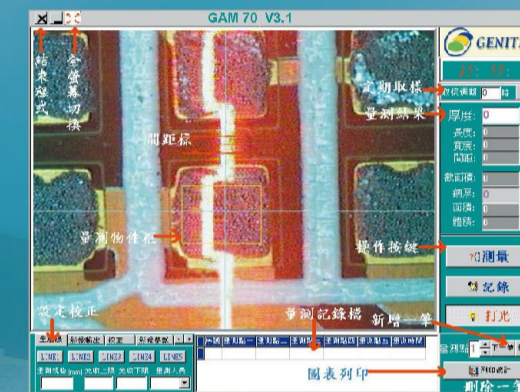
### 選購品 (OPTION)

- 軟板固定治具。
- 雙面板量測固定治具。
- 鋼板X-Y軸移動式檢查檯面。
- Die mould of fix soft board.
- Die mould of measure two-sided board.
- Steel measurement table by x-y axis movement type.

### 智茂電腦科技有限公司

#### GENITEC TECHNOLOGY CO.,LTD

412台灣台中市大里區國中二路11號  
No.11, Guozhong 2nd Rd., Dali Dist., Taichung City 412, Taiwan  
Tel:886-4-24065816 Fax:886-4-24065688  
E-mail:gtc@genitec.com.tw



### 量測操作畫面 Menu of Survey and Operation

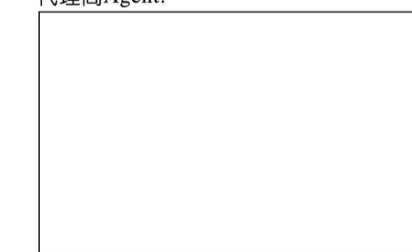
- 全螢幕呈像。
- 取樣容易。
- 操作簡易。
- 各項量測數值即時顯示。
- Displaying Image in Full Screen.
- Easy Sampling.
- Easy Operating.
- Real-Time Displaying and Recording About All Survey Values.



### 厚度分佈圖表 Diagrams of Thickness Distribution

- 各類厚度分佈圖表顯示列印。
- 所有量測顯示列印。
- 厚度分佈百分比統計。
- Statistics and Printing of thickness distribution diagrams.
- Display and Print about all survey values.
- Analysis and Statistics about all survey values.

代理商Agent:



www.genitec.com.tw